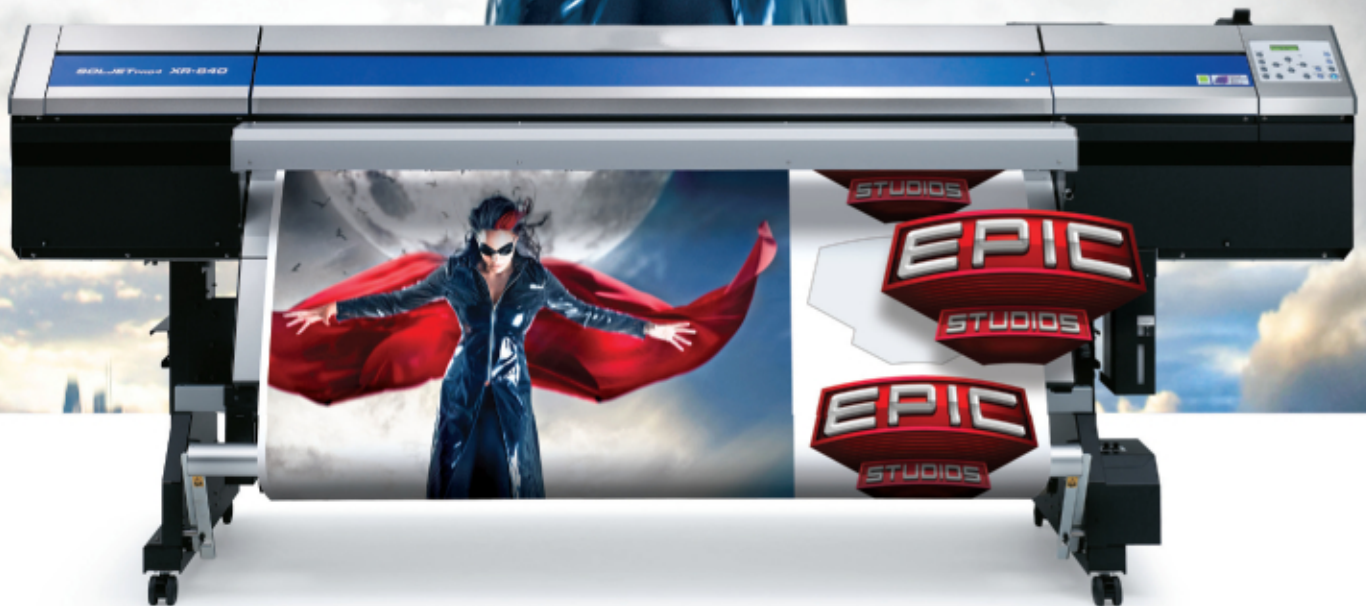


The epic Pro 4
Production perfected.





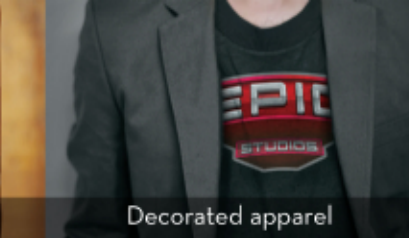
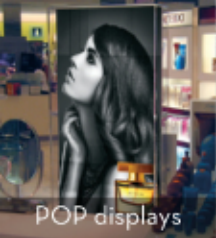
64 inches, new print engine, dual inline heads, new Eco-Sol MAX[®] 2 ink with CMYKLcLm + Light Black, Metallic Silver and greater opacity White, print and contour cut, fast, durable.



We've put every advanced feature that makes printer/cutters awesome into one epic package.

most powerful large-format color printer/cutter ever, the 64-inch SOLJET Pro 4 XR-640 ushers in a new era of quality, precision and performance. The heart of the Pro 4 is its new print engine. Incorporating the latest in inkjet technology, it features two inline 8-channel piezo inkjet heads with 180 nozzles per channel, capable of printing seven different droplet sizes for smoother gradations and richer density in photographic and high-resolution vector output. The mirrored configuration of the print heads virtually eliminates chromatic banding, even in bi-directional printing modes.

And that's just the beginning. Integrated printing and contour-cutting streamlines the production process. The Pro 4's 64 inch width is ideal for vehicle wraps and other large applications. Our new high-density Eco-Sol MAX 2 inks deliver a wider gamut and unsurpassed image quality at all speeds. And powerful VersaWorks™ RIP software is included, taking full advantage of the Pro 4's capabilities with a host of new features including a Predictive Ink Calculator, Spot Color Replacement Tool, and built-in PANTONE® spot color libraries. The final results are consistent, efficient performance and the best prints ever produced on any Roland device. It's Production. Perfected.



POP displays

Backlits

Labels

Decorated apparel

Large-format banners

New Higher Density Eco-SOL MAX 2 Inks with Light Black, White and Metallic

The Pro 4 is the first device to use Roland's new, high-definition Eco-Sol MAX 2 inks. And they've taken production quality to a new level. Environmentally friendly and virtually odorless, nickel-free MAX 2 inks are specially designed to deliver a wider color gamut with superb detail in the highlights and smoother blends. Combined with our new print heads and smaller droplets, higher density MAX 2 inks produce better ink coverage and more vibrant color at faster speeds.

With MAX 2 inks and the Pro 4, you have your choice of an array of specialty inks that add value to any graphic. Our new Light Black ink delivers more neutral grays, smoother gradients and more natural skin tones. Higher density White ink allows for greater opacity and makes graphics pop off of clear media. A new formulation of Metallic Silver provides more brilliant output and can be printed as a pure spot color or combined with CMYK to produce over 500 striking metallic and pearlescent colors. Our new White and Silver inks can also now be printed at speeds up to twice as fast as before.

Two-Year Trouble-Free Warranty

There's no question that the XR-640 combines unbeatable performance with legendary reliability. As further proof of its unmatched reliability, the XR comes with a Two-Year Trouble-Free Warranty,* giving you the peace of mind you need to maximize productivity day in and day out.

“Our Pro 4 gives us breakthrough production. Our turnaround time is whatever our client wants and we run the XR for weeks straight at a time with no maintenance issues.”

Jessee Powell, Art Signs and Graphics



New Light Black Ink

Delivers neutral grays, smooth gradations and natural skintones

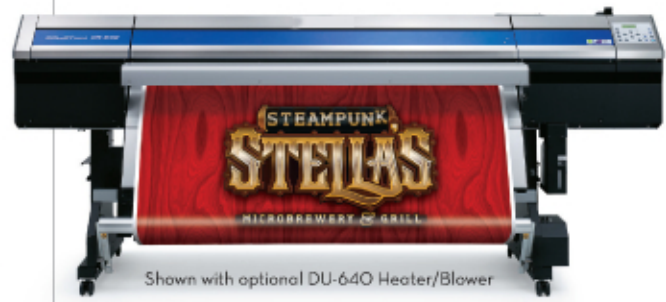
Metallic Silver Ink

Produces over 500 striking metallic and pearlescent colors



SOLJET PRO 4 XR-640 INKJET PRINTER/CUTTER

- Large-format printer/cutter with 64" width
- Two mirrored print heads in inline configuration
- New high-definition, Eco-Sol MAX 2 ink (nickel-free, virtually no odor) available in 4 configurations:
 - > CMYK Lc Lm + Light Black
 - > CMYK Lc Lm White + Metallic
 - > CMYK Lc Lm Light Black + White
 - > CMYK Lc Lm Light Black + Metallic
 - > GREENGUARD Gold certified for indoor safety
- Prints 3 different-sized droplets from 7 sizes available
- Photorealistic printing up to 1440 dpi
- Intelligent Pass Control Technology
- Print speeds of up to 528 sq. ft. per hour (49 m²/h)
- Automated ink circulation system reduces ink waste
- Prints on both uncoated & coated media
- Up to three years outdoor durability without lamination*
- Integrated contour cutting with Quadralign™ registration
- Media handling system supports rolls up to 88 lbs. (40 kg)
- Automated take-up system included
- Integrated tri-heater (optional dryer system available)
- Includes VersaWorks RIP software
 - > Easy-to-use Graphical User Interface
 - > Color System
 - > Variable Data Printing
 - > Built-in PANTONE® spot color libraries
- Advanced X-Rite color management tools available



Shown with optional DU-640 Heater/Blower

PRODUCT SPECIFICATIONS

Model		XR-640
Printing method		Dual Head Piezoelectric Inkjet
Acceptable media	Width	Roll media: 10.2 to 64 in. (259 to 1625 mm)
	Thickness	Roll media: Maximum 39 mil (1.0 mm) with liner
	Weight	Roll media: Maximum 88 lb. (40 kg)
	Roll outer diameter	Maximum 8.3 in. (210 mm)
	Core diameter	3 in (76.2mm) / 2 in (50.8mm) with optional flanges
Media take-up system		Maximum 8.3 in (210 mm) outer diameter / Maximum 88 lb. (40 kg) weight
Printing/cutting width		Maximum 63 in (1600 mm)
Maximum Printing Speed		528 sqft/hr (49 sqm/hr) in CMYK Lc Lm Lk at 360x360 dpi
Ink cartridges	Type	Eco-Sol MAX 2 Ink
	Capacity	440 ml (± 5 ml) [white and metallic available in 220 ml only]
	Color	9 colors (Cyan, Magenta, Yellow, Black, Light Cyan, Light Magenta, Light Black, Metallic, White)
	Configurations	CMYK+Lc+Lm+Light Black, CMYK+Lc+Lm+White+Metallic, CMYK+Lc+Lm+Light Black+White, CMYK+Lc+Lm+Light Black+Metallic
Printing resolutions		Maximum 1440 dpi
Distance accuracy		Error of less than ± 0.3 % of distance traveled, or ± 0.012 in (0.3 mm), whichever is greater.
Media Heating System		Setting range for the preset temperature: Print Heater: 86 to 112°F (30 to 45°C) / Dryer: 86 to 122°F (30 to 50°C)
Interface		Ethernet (10 BASE-T / 100 BASE-TX, automatic switching)
Power-saving function		Automatic sleep feature
Power supply	Voltage and frequency	AC 100 to 120 V ± 10%, 50/60 Hz
	Required power capacity	Maximum 12 A
Power consumption	During operation	1600 W
	Sleep mode	47 W
Dimensions (with stand)		116[W]x47.8[D]x49.6[H] in (2948[W]x1211[D]x1260[H] mm)
Weight (with stand)		452 lb. (205 kg)
Environment	Power on	Temperature: 59° to 90°F (15° to 32°C) (68°F [20°C] or more recommended) / Humidity: 35 to 80% (no condensation)
	Power off	Temperature: 41° to 104°F (5° to 40°C) / Humidity: 20 to 80% (no condensation)
Included items		Stand, cleaning liquid cartridges, power cord, media clamps, blade, blade holder, replacement blade for sheet cutter, VersaWorks RIP Software, cleaning kit, manual, etc.

Specifications subject to change. *Outdoor durability is based on accelerated weather tests. Results may vary depending upon location and application. Lamination may be required for some applications or environmental conditions. **Registration within 60 days and continuous exclusive use of Roland inks during the first two years of ownership is required to qualify for the free second year of limited warranty coverage. Additional Terms and Conditions apply.